

"Failure is not the opposite of success: it's part of success."

Arianna Huffington

## UAE NEWS

- Sheikh Hamdan announces initiatives to improve Emiratis' quality of life. Projects will focus on community development, social services, housing and other areas.
- Dubai real estate market recorded 482 sales transactions worth AED1.19 billion, in addition 136 mortgage deals of AED580.36 million on Monday, data by DLD.
- Dubai Integrated Economic Zones Authority (DIEZ) announced a significant 42 percent growth in revenues for H1-2022 compared to the same period last year.
- Americana announced investor allocations and the revised timetable for its IPO – the historic, first-of-its-kind concurrent dual listing on ADX & the Saudi Stock Exchange.
- Abu Dhabi-based International Holding Co. has completed a 17% capital raise, bringing in Infinity Wave Holding as a "strategic shareholder."
- Abu Dhabi Airports passenger traffic in Q3-22 totalled to 4.7 million passengers, a rise of 250% compared to the 1.3 million passengers in Q3 2021.

## SIB'S DISTRIBUTED (OCT) PROFIT RATES - PER ANNUM

Watany Investment a/c.	0.15625%
Savings Investment a/c.	0.62500%

## UNRESTRICTED INVESTMENT DEPOSITS (AED) - OCT - PER ANNUM

1 month	3 months	6 months	9 months	1 year
0.93750%	1.40625%	1.71875%	1.87500%	2.50%

## CUSTOMER WAKALA DEPOSIT - EXPECTED PROFIT RATES - PER ANNUM

1 month	3.50%	6 months	4.15%
3 months	4.00%	1 year	4.20%

## 30-Nov-22 EIBOR LIBOR SOFR (TERM)

1 month	4.12398	4.05471	4.12200
3 months	4.42995	4.73386	4.40500
6 months	4.88122	5.21871	4.68800
1 year	5.11072	5.59800	4.87500

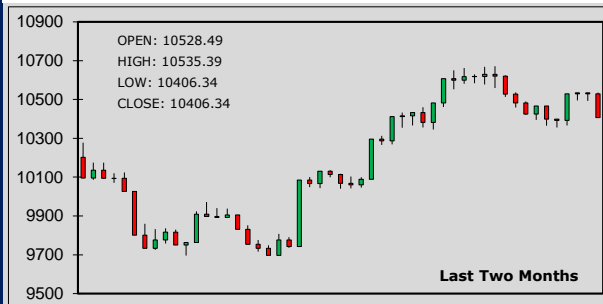
## DONIA

O/N	3.71290
1 week	3.68670

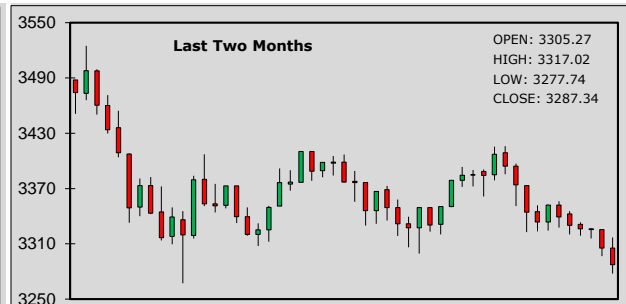
## SOFR

O/N	3.8
-----	-----

## ADX Index:



## DFM General Index:



## STOCKS - ADX

	OPEN	CLOSE	% CHG
SIB	1.970	1.960	-0.51
Aldar Properties	4.540	4.550	0.22
Etisalat	25.00	24.42	-2.32
FAB	18.100	17.400	-3.87
ADIB	9.310	9.180	-1.40
Dana Gas	0.913	0.913	0.00
Borouge	2.710	2.690	-0.74

## STOCKS - DFM

	OPEN	CLOSE	% CHG
Emaar Properties	5.900	5.950	0.85
DEWA	2.390	2.360	-1.26
Aramex	3.620	3.620	0.00
Air Arabia	2.050	2.030	-0.98
SALIK	2.300	2.270	-1.30
Dubai Islamic Bank	5.750	5.720	-0.52
DFM	1.540	1.540	0.00

## SUKUK

	BID	OFFER
9.875% MALDIVES 2026	77.375	78.375
7.25% TURKEY 2027	96.500	97.500

## SUKUK

	BID	OFFER
2.85% SIB SUKUK III	93.996	94.109
7.95% PAKISTAN 2029	50.500	50.801

## LATEST STOCK MARKET INDICATORS:

Dow Jones:	33,849.46	-497.57	FTSE:	7,474.02	-12.66	Bahrain:	1,865.75	+0.04
Nasdaq:	11,049.50	-176.86	Nikkei:	28,030.37	-132.46	Qatar:	11,629.55	-106.29
S&P 500:	3,963.94	-62.18	DFMGI:	3,287.34	-17.93	Kuwait:	7,536.27	-58.13
Hang Seng:	18,018.81	+720.87	ADX:	10,406.34	-122.15	Saudi:	10,746.64	-49.82

## ISLAMIC BANKING NEWS

Saudi-based Rasanah Capital, the latest investment firm having secured licence this year, has assigned Shariyah Review Bureau (SRB) to supervise its compliance requirements.

Bank Nizwa offers shari'ah-compliant home finance solutions for the Sustainability City – Yiti. Signs MOU with Sustainable Development and Investment Company.

## GCC NEWS

Saudi Arabia's economy expanded robustly in 2022 and is expected to reach a full year GDP growth rate of 8.9%, the highest reading since 2011 - Riyadh Capital.

Saudi-based Almarai Company will invest 4.5 billion Saudi riyals (\$1.12 billion) to expand poultry production in Al-Shamli governorate, Hail Region.

## COMMODITIES

Gold prices rose on Tuesday, helped by a softer dollar, while market participants awaited more clarity on the U.S. Federal Reserve's rate hike stance.

Oil rebounded after falling in the previous session, as investors weighed a potential output adjustment from the major oil producers, who are set to have a key meeting this week.

## FOREX NEWS

USD, which rallied in the previous session on mounting worries over China's COVID situation, pared some of its overnight gains and moved broadly lower.

AUD rebounded as risk appetite recovered somewhat from the hit caused by COVID protests in China, although the upward momentum could peter out ahead of a speech by Fed Chair.

## FOREX RATES

	Prev. High	Prev. Low	AED		Prev. High	Prev. Low	AED		
EUR	↓ 1.0388	1.0496	1.0329	3.8155	JPY	↓ 138.480	139.4200	137.4800	0.02652
GBP	↑ 1.2009	1.2118	1.1937	4.4109	CAD	↑ 1.3432	1.3504	1.3389	2.73451
AUD	↑ 0.6706	0.6730	0.6640	2.4631	INR	↑ 81.585	81.8325	81.4970	0.04502
CHF	↓ 0.9462	0.9498	0.9403	3.8818	PKR	↑ 223.000	224.2500	223.0000	0.01647

## MAJOR CHARTS

EUR/USD price movements:



Gold price movements:



### SOFR - OVERNIGHT INDEX SWAP (OIS)

	1 year	2 years	5 years	10 years
USD	4.8750	4.4751	3.6670	3.3900

### USD SWAP RATES

	2 years	3 years	5 years	10 years
USD	4.7604	4.3380	3.9380	3.6520

### COMMODITIES

	LAST PRICE	NET CHANGE
Gold	1,754.09 \$ / ounce	+13.34
Silver	21.30 \$ / ounce	+0.33
Brent Crude	85.00 \$ / barrel	+1.81
WTI Crude	78.61 \$ / barrel	+1.37

### CRYPTO CURRENCIES

IN US\$	ETHEREUM	BITCOIN
1,207.40	16,456.17	

## FORTHCOMING ECONOMIC INDICATORS

29-11-22 - CAD - GDP Growth Rate Annualized

30-11-22 - USD - GDP Growth Rate QoQ 2nd Est

29-11-22 - CHF - GDP Growth Rate YoY (Q3)

30-11-22 - USD - Fed Chair Powell Speech

29-11-22 - USD - CB Consumer Confidence

30-11-22 - EUR - Unemployment Change

## FINANCIAL TERM OF THE DAY

### Loan Constant

A loan constant is a percentage that shows the annual debt service on a loan compared to its total principal value. The calculation for a loan constant is the annual debt service divided by the total loan amount.

**DISCLAIMER** - This document is issued by Sharjah Islamic Bank (SIB), Sharjah, solely for the purpose of information to its staff's and customers. All efforts have been taken to ensure, facts and figures presented herein are as accurate and error free as possible. The data are subject to change without notice. The information contained within this document is not intended to buy or sell. The information contained within this document are obtained from sources that we believe are reliable, however, there is no guarantee on the part of their accuracy, nor should SIB be held responsible for any action taken on the above information.

Please contact your respective branches or Treasury Dealing Room. Tel: 06 599 9171 Fax : 06 599 9181  
 E-mail : treasury&investmentdealingroom@sib.ae